



RETURN TO SCHOOL

Health & Safety
Guidelines



Health and Hygiene on Campus

In preparation for students eventually being allowed to return to campus, we have introduced numerous protocols that include, but are not limited to:

Regular sanitisation

Students and staff being required to sanitise their hands at regular intervals, especially before and after set activities. Cleaning and sanitisation schedules have been increased, especially in high usage areas.

Same classroom

Wherever possible we are planning for students to be based in the same classroom throughout the day and the teachers will move accordingly.

Classroom arrangement

Classrooms will be arranged in such a manner to ensure the appropriate social distancing.

Flag & Assemblies

No whole school or sectional assemblies will take place, until such times we receive the appropriate permission from the Ministry of Education. Flag will be conducted each day in homerooms.

One-way pedestrian system

A one-way pedestrian system for various parts of the campus has been introduced.

Break times

Break times will be staggered, with outside areas being clearly designated for various classes.

Isolation room

The introduction of an isolation room in case a student or member of staff becomes unwell during the day.



Health and Safety Protocols



Prior to Coming to School

Daily health check

We would ask all parents to continually check their children's (and their own) health daily. If you or your child (or any member of your immediate family) display any symptoms of the virus, please do not send the child (or their brothers/sisters) to school. Please seek the appropriate medical advice and inform the school immediately.

Pre-existing medical condition

We would also ask that if your child has a pre-existing medical condition that may place them at greater risk of infection, you inform the school so that the appropriate precautions/actions can be taken. Should any parent request their child to be educated from home, due to a pre-existing medical condition, the school will do all it can to accommodate this request.

By continually monitoring the situation we can help detect the virus early and keep the campus a safe educational environment.

Health and Safety Protocols

Entering Campus

Wearing a face mask

Please note that we require all adults (and children over the age of 10) to wear face masks on campus. The school's security guards have been instructed to deny access to anyone who is not wearing a mask upon arrival at the gate.

Sanitisation tunnels

Everyone entering campus will be required to use one of the sanitisation tunnels that will be placed at strategic points around the campus.

Once on campus, all vehicles will be required to follow a predetermined route to a designated drop-off/temperature check area.

Prior to being allowed to leave the vehicle students will have their temperature taken. Any student registering a high temperature will not be allowed to exit the vehicle and will be instructed to return home. This will also apply to any other students in the same vehicle.

Please note that parking will not be allowed (except for KG) and vehicles will be expected to leave campus immediately after drop off. For our younger students, we will have staff members waiting in the drop-off area ready to escort them to class.

School Arrival/Entry Checklist



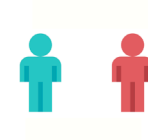
**Temperature
Checked**



**Mask
On**



**Hands
Sanitized**



**Social Distance
At All Times**

SAFETY FIRST



NO MASK NO ENTRY

Health and Safety Protocols

Wearing a mask

Face masks are mandatory for all students over 10 years of age, teachers, staff and visitors.

All staff, students and visitors should sanitise hands before touching their face mask or face.

Students must not wear any bright coloured or patterned masks!



**FACE MASK
MUST BE WORN
AT ALL TIMES**

Do's →

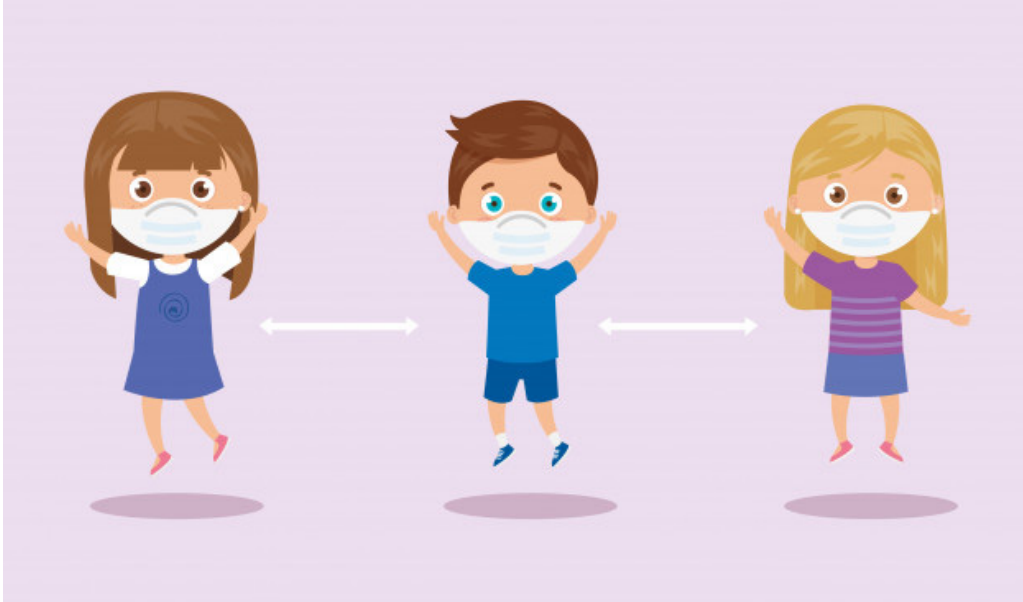
- Wash your hands before touching the mask
- Inspect the mask for tears or holes
- Find the top side, where the metal piece or stiff edge is
- Ensure the colored-side faces outwards
- Place the metal piece or stiff edge over your nose
- Cover your mouth, nose, and chin
- Adjust the mask to your face without leaving gaps on the sides
- Avoid touching the mask
- Remove the mask from behind the ears or head
- Keep the mask away from you and surfaces while removing it
- Discard the mask immediately after use preferably into a closed bin
- Wash your hands after discarding the mask

Don'ts →

- Do not use a ripped or damp mask
- Do not wear the mask only over mouth or nose
- Do not wear a loose mask
- Do not touch the front of the mask
- Do not remove the mask to talk to someone or do other things that would require touching the mask
- Do not leave your used mask within the reach of others
- Do not re-use the mask

Remember that masks alone cannot protect you from COVID-19. Maintain at least 1.5 metres distance from others and wash your hands frequently and thoroughly, even while wearing a mask.

Classroom Routines



No whole school or sectional assemblies or Flag

This will reduce the interaction between students and staff. Flag will be held in classrooms each morning. Assemblies will be planned and broadcast to classrooms through the use of Firefly and Teams.

Desks

Desks will be arranged so they all face in the same direction. Students will be required, as much as possible, to stay in their seats, thus reducing movement around the classroom.

Sanitise after every activity

Students and teachers will be required to sanitise after every activity. Each classroom will be provided with sanitisers and paper towels.

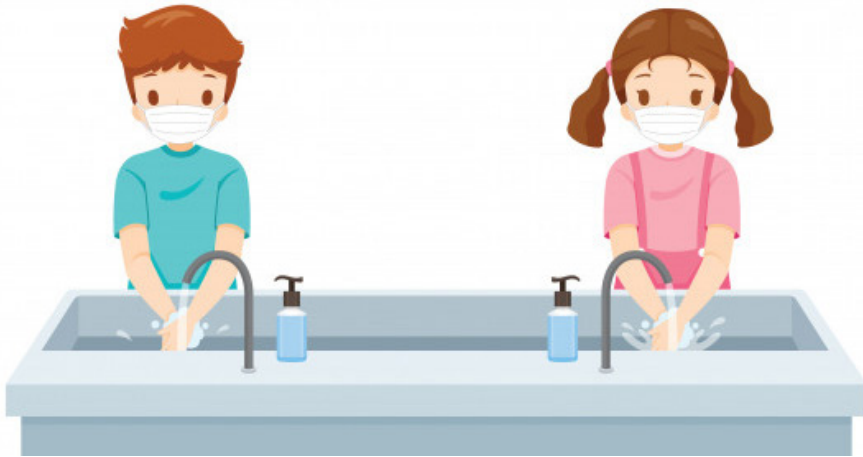
In addition, students will not be allowed to share equipment like pens, pencils, rulers etc.

For the younger students there will be no carpet time without the appropriate separation.

All group work will be suspended unless the activity can be modified to avoid close physical proximity.

All materials and resources will be provided through the schools
Virtual Learning Environment (VLE) - Firefly

Break times and Lunch times



Break times:

- Break times will be staggered, with outside areas being clearly designated for various classes.
- Break times will be closely monitored to ensure students are maintaining the appropriate social distancing.
- Following break time, all 'high touch' areas will be cleaned.

Lunch times:

In line with MOE regulations the school will not be providing lunch for students during term 1. Students need to bring their own lunch or snacks.

Immediately following break, all students will be required to wash their hands prior to returning to the classroom.

Students and staff will be required to bring their own snacks.

Medical Procedures



If a student feels unwell during the day, they should immediately inform a teacher.

If the student has flu-like symptoms, they will be taken to the school nurse, who will isolate the child and inform the SMT and parents.

The student will then be required to seek professional medical advice and inform the school of the outcome of any tests.

The school will endeavour to contact everyone the student has been in contact with.

The school has prepared a special medical treatment room for suspected COVID-19 cases that will be separate from the school's existing medical facility.

Should a student test positive for COVID-19, they will not be allowed to return to school, until they have been given the 'all clear' by a doctor.

End of School



Pickup

At the end of the school day, all students will be expected to leave campus as quickly as possible.

Pick-up will only be allowed from designated areas.

Parents, nannies and drivers will be expected to wait in their vehicles.

Younger students will be escorted to the pick-up area by their teacher.

There will be no Extra-Curricular Activities (ECAs) or School Trips (domestic or international) during term 1.